

RIDING TIPS

Commuting by bike is fun and safe when you know the rules of the road and follow safety precautions. Inspect your bike by checking your tires and brakes before you hit the road. If you are unsure of your bike's condition, take it to a bike shop.

FIG. I — A COMMUTER BIKE

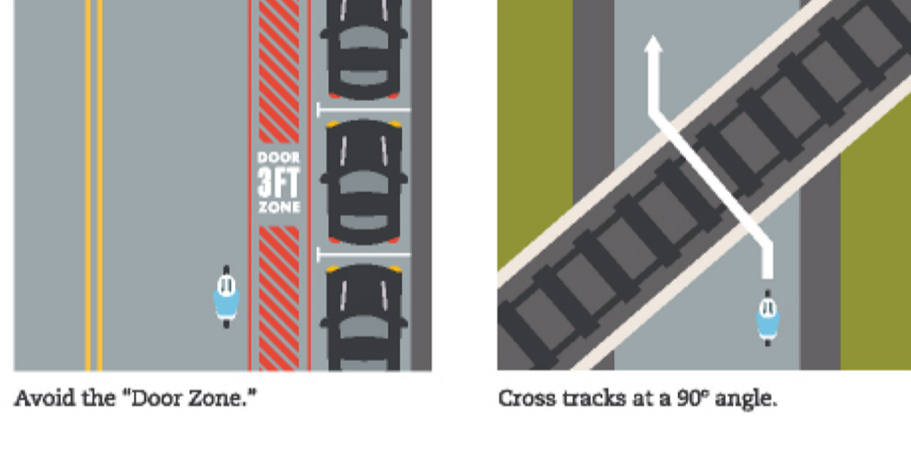
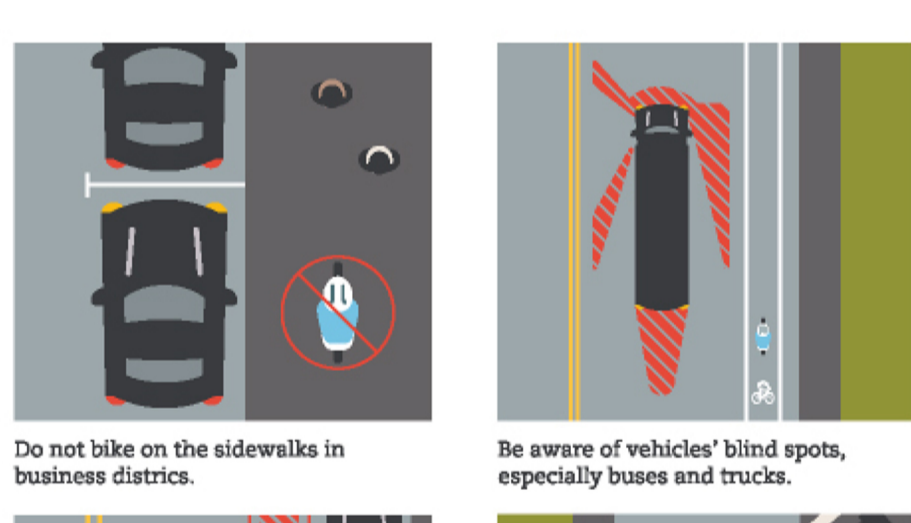
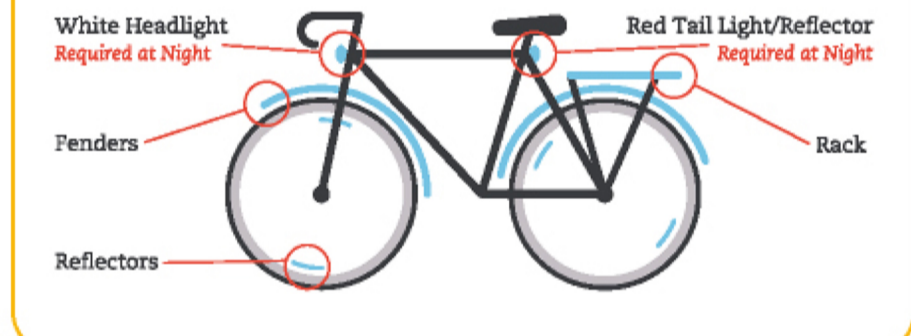


FIG. III — YOUR ABC'S

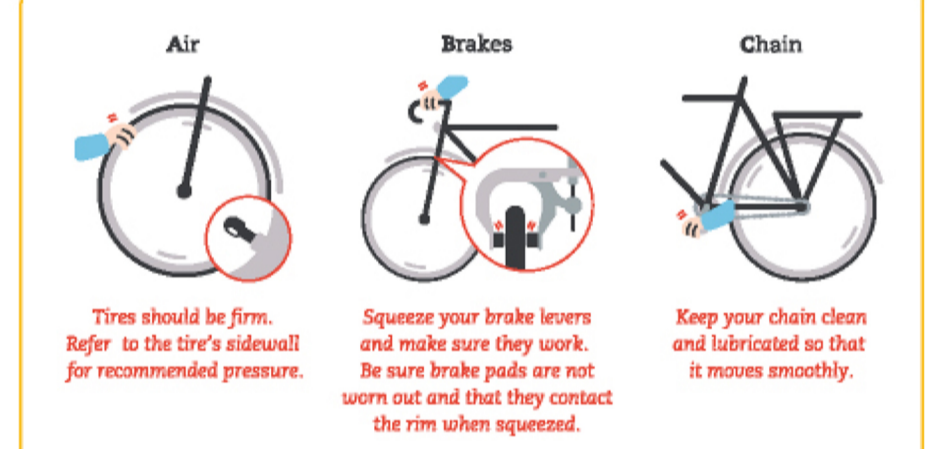


FIG. IV — BE A SMART CYCLIST

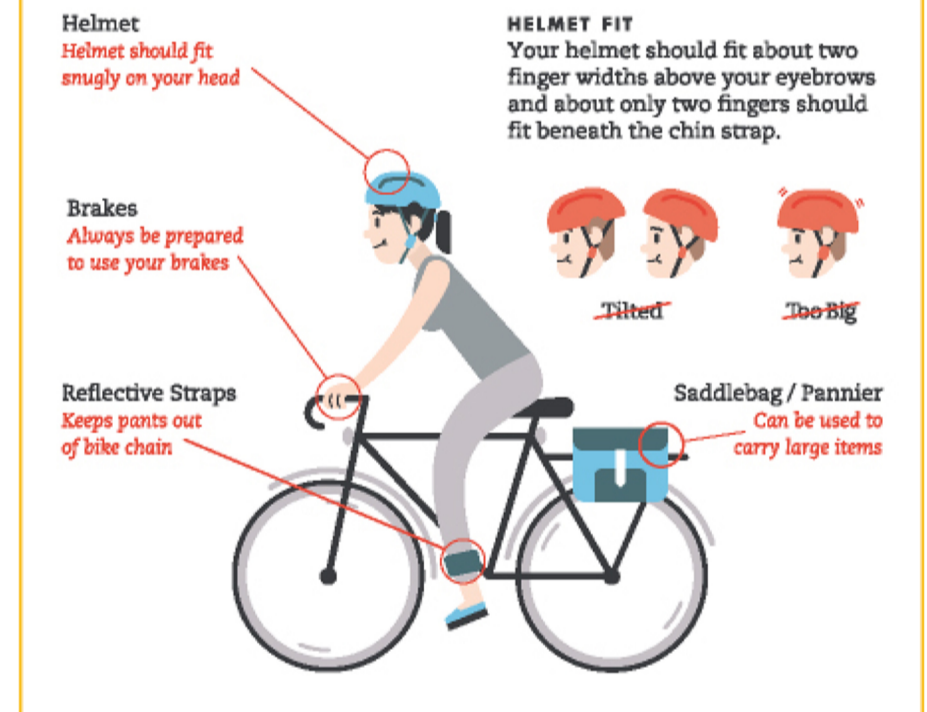
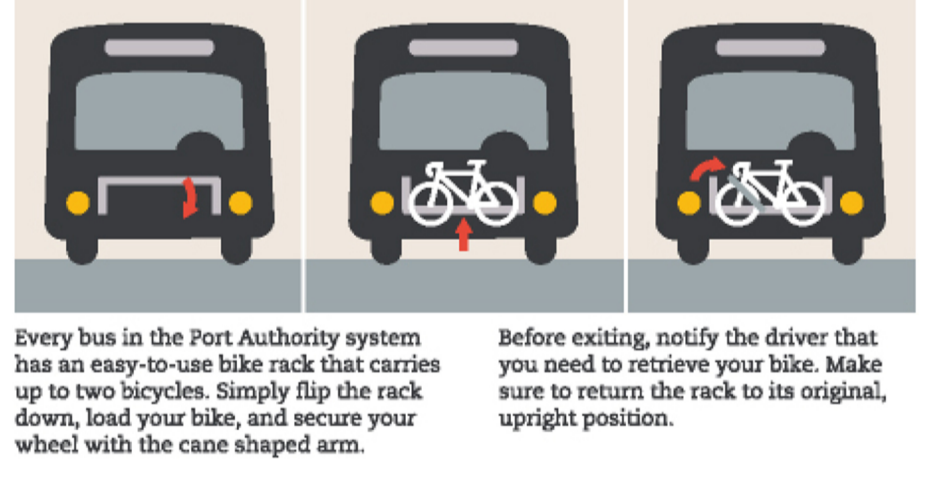
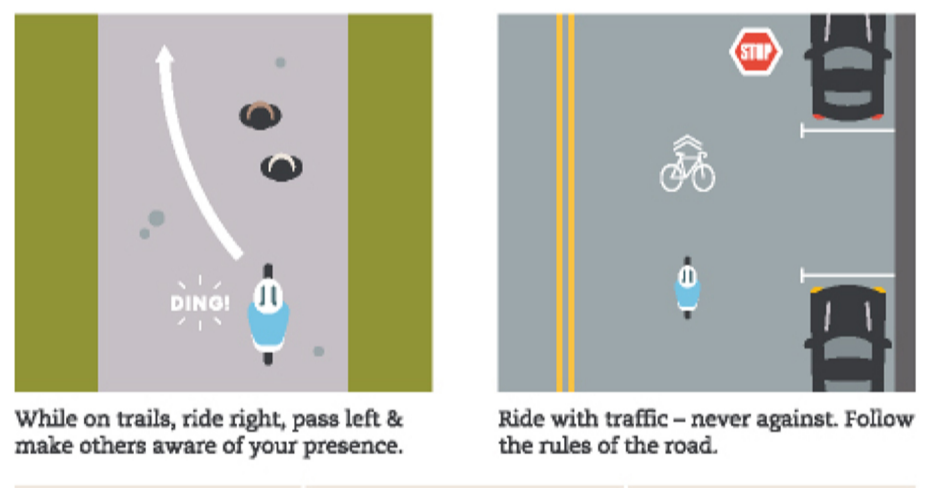
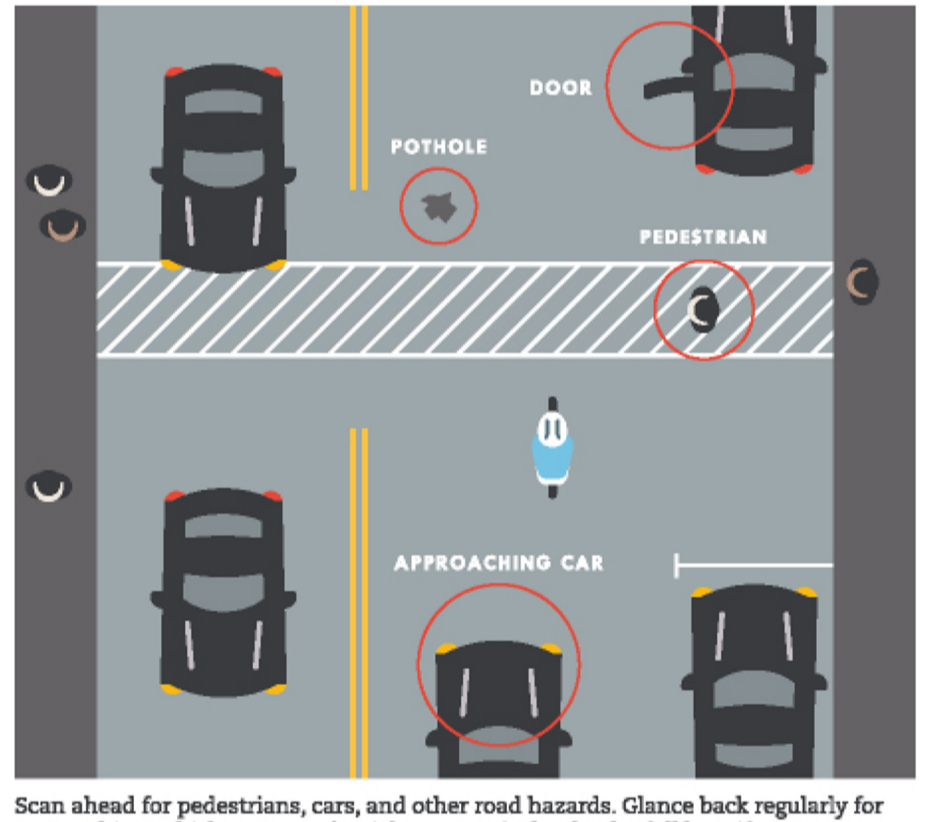
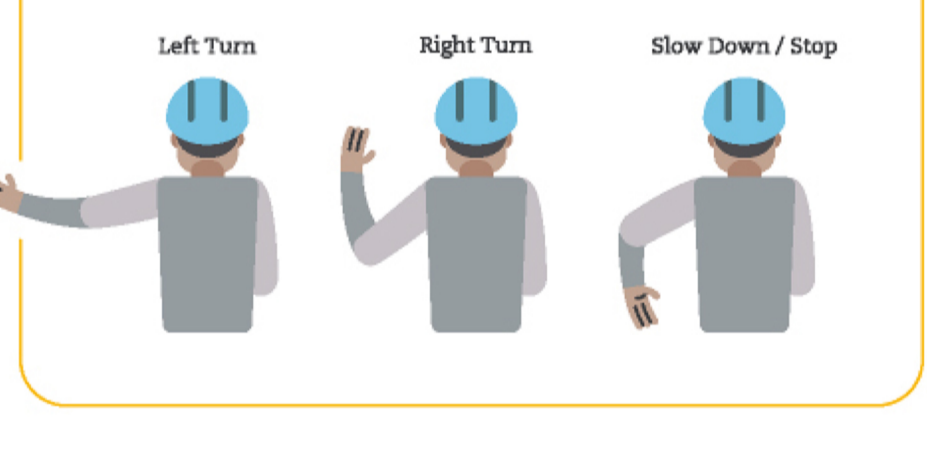


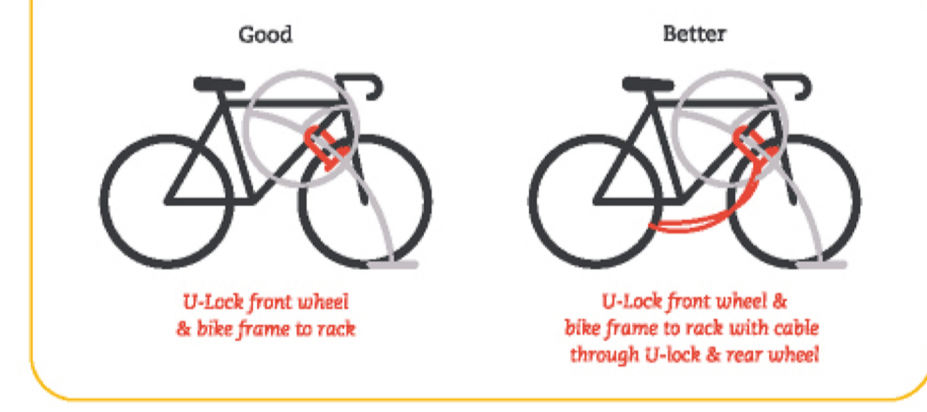
FIG. IV — HOW TO SIGNAL



SPECIAL THANKS TO:

Cartography by: ROBERT GRADECK & CAESAR DE CHICCHIS

FIG. II — THEFT PREVENTION



LEGEND

- Marked On-Street Bike Route
- On-Street Bike Route
- Cautionary Bike Route
- Trail
- Bridge
- Street
- Highway Cars Only
- Busway Buses Only
- Railroad
- Major Park
- River / Lake
- Notable Place
- One-Way
- Steep Hill
- Very Steep Hill
- Trail Access
- Bike-able Sidewalk
- Bike Shop
- Free Trail Head Parking
- "T" Stop Bike Accessible
- Busway Stop
- High School
- Tunnel
- Shopping Area

MILES 1/4 1/2 3/4 1

PITTSBURGH BIKE MAP

#5 412

BECOME A MEMBER

MEMBERSHIP MATTERS

Join Bike Pittsburgh and invest in a more bike and pedestrian friendly city! Not only do you become a card-carrying member with all the perks of benefits and discounts from dozens of local businesses, you also make our collective voice stronger!

BIKEPGH.ORG/MEMBERSHIP

A COLLABORATION BETWEEN BIKE PGH & DEELOCAL

BIKEPGH.ORG